

Get **connected** to your
productivity with

Silkron® Equiptor is the complete solution for Equipment Management and Monitoring as well as Shop Floor Management. It is specifically designed to manage the most important assets (Equipments) in the production floor for maximum productivity and optimum quality.

The system is designed upon various cutting-edge technology including web-based platform, online approval, SMS / email notification and integration to employee badge for secured transaction and tracking.

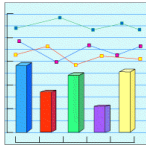
Silkron® Equiptor



FEATURES HIGHLIGHT

- ✓ Inventory tracking of Spare parts, conversion kits, test boards, load boards and etc.
- ✓ Online request and optional approval for inventory check in/out.
- ✓ Check in/out history by inventory parts.
- ✓ Low stock, cold stock and spare consumption tracking.
- ✓ Maintenance (PM/Cal) scheduling and tracking with auto-notification.
- ✓ Integrated spare parts consumption for maintenance activities.
- ✓ Maintenance delay with approval loop and escalation on overdue.
- ✓ Equipment and machine status tracking and configuration management.
- ✓ Real-time equipment state monitoring and performance tracking.
- ✓ Equipment utilization and downtime analysis.
- ✓ Process and test data management and analysis, and more...

Overview



Real-time Monitoring:

- Utilization
- Performance
- Downtime
- Process & Test Data



Office or
Anywhere
(PC, laptop, PDA,
smartphones, etc)



Maintenance
Scheduling
& Tracking

Inventory
Management

- optimum stock
- consumption
- transactions

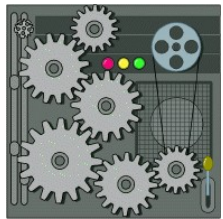
Production Floor



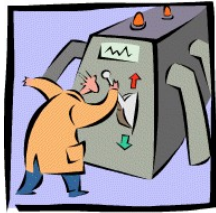
Maintenance



Inventory Store



Equipment



Downtime

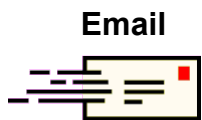
Parts
check-in/out



Inventory:

- Spare Parts
- Conversion Kits
- Tools / Instruments
- Consumables
- Others

Auto Alert, Reminder
& Notification via:

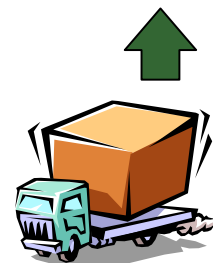


Email

SMS / MMS



Repair



Supplier

KEY BENEFITS

- ✓ Access from anywhere anytime (PC, laptop, PDA, smartphones, etc)
- ✓ User-friendly and easy to learn (web-based)
- ✓ Easy maintenance (centralized server and no client-side installations)
- ✓ Great expandability
- ✓ Real-time reporting, no need or less printout
- ✓ Zero loss, fast turn-around and effective feedback via online approval
- ✓ Easy accessibility to history records
- ✓ Low risk of data loss – backup from single location conveniently
- ✓ Effective information sharing and collaboration
- ✓ Understand the production and equipment performance with facts
- ✓ Great control and close monitoring on inventory usage and equipment
- ✓ Prompt decision-making in dynamic manufacturing environment

The screenshot displays the Silkron Eqpitor web application in a Microsoft Internet Explorer browser. The address bar shows the URL http://silkron-svr/eq/main/mn_frame.php. The page title is "Silkron Eqpitor" and the date is "2005-08-22 20:03:26". The user is logged in as "phoebe". The navigation menu includes "Inventory", "Equipment", "Others", "Administration", and "My Profile".

Machine Details

Equipment > Machine > View > Machine Details

Equipment Name	: Aseco
Machine ID	: MIC-ASECO#2
Model	: Aseco
Production Area	: TDS
Owner	: TDC
Serial No.	: 04109H70
Asset No.	: HPD12390092
Date Received	: 02-08-2004
Status	: -
Person In-charge	: Ong Chearn May
Customer	: MDA
Package	: 10MLPD3X3V, 10MLPM3X3EP
Product Group	: BCC, FCSOT, LGA, MLP, MP, MSOP, PBGA, PDIP, PLCC, POFPP, QSOP, QVSOP, SC, SC79, SCT, SLP, SOIC, SOICN, SOICW, SOJ, SOT, SOT2, SPAK, SSOP, TO, TQFP, TSOP, TSOT, TSSOP(4.4), TSSOP(6.1), VSOP, Z, ZZZ
Typical Run Rate (Parts Per Minute)	:
Integrated	: Standalone
2D Vision	: No
2nd Rotator	: No
Software Revision	:
Remark	:

Click on image to view

Real-time Monitor

Link Status: Connected

Current State: **BLOCKED**

Remark:

Back to top

FAQ

Who should use Equiptor?

Manufacturers of any industries who want to manage their equipments and machines effectively with detailed tracking on inventory and maintenance, and to collect useful data from their equipments and production floor for prompt and fact-based decision-making in their operations.

Can Equiptor work together with our existing ERP system?

Yes. Equiptor can be linked and integrated with any ERP system to complement the functionality to provide detailed tracking into the operations in order to meet production goals.

How can we implement the automated real-time monitoring to link up to all our equipments?

Silkron® DAQ, our another break-through solution that enables automated data collection and event monitoring in all equipments and devices is ready to be linked to Equiptor seamlessly to monitor all your equipment status and data. Please contact our sales representatives for more information.

